



Rezatec

Analyzing Earth Data

GEOSPATIAL DATA ANALYTICS FOR FOREST DISTURBANCE MONITORING

FORESTRY / FOREST DISTURBANCE

THE BUSINESS CHALLENGE

In managed forests, disturbance events typically fall into two main categories: **Anthropogenic events** such as planned harvesting activities (clear-fell or thinning), or non-planned harvesting/illegal logging; and **Natural events** such as forest fire, pest/disease damage, or storm damage.

Each have economic implications and can have severe consequences if they are not suitably managed. Therefore, knowing when and where an event occurs, and its scale, is of critical strategic and financial importance for many forestry companies.

To date, methods of monitoring disturbance events have typically been reactive, in the case where events are unexpected, large sums are spent on manually identifying affected areas via costly ground or aerial surveys.

CONTACT US

info@rezatec.com

+44 (0)1865 817 500

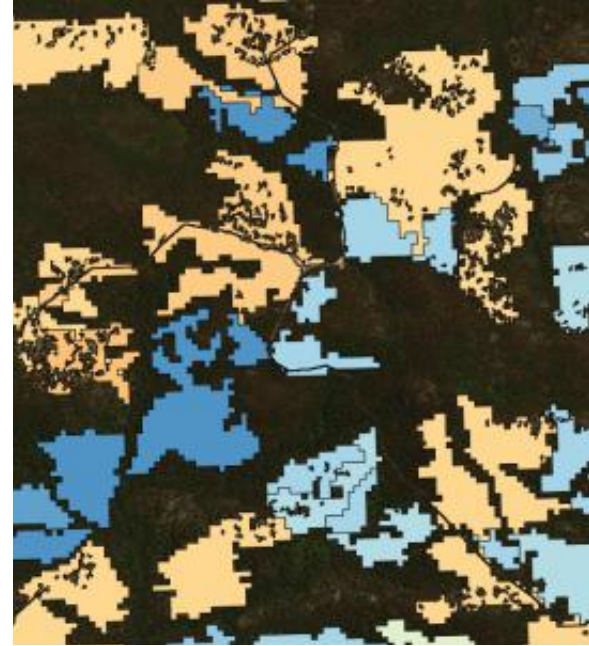
www.rezatec.com



OUR FOREST MONITORING SERVICE

Being alerted to disturbance events quickly and having up-to-date information detailing such events is crucial for proactively managing your area. It enables you to accurately report on current timber stocks and current harvesting activities taking place. In addition, if an unexpected event does occur, you can identify it quickly, and begin remediation work and implement prevention measures with minimal impact.

Rezatec provides a landscape intelligence data service using satellite data to monitor the changing state of forested assets over time and identify any significant decreases or loss of tree canopy cover which could be associated with either anthropogenic or natural disturbance. These disturbance event areas are then identified spatially, with an associated time reference for the period of change, and the user can extract the associated timber quantities potentially damaged by these events.



- + Map the location and extent of disturbance events
- + Accurately date disturbance and track its progress over time
- + Assess the count and volume of trees affected by the disturbance and extract timber value
- + Monitor regularly to detect disturbance early

FIND OUT MORE

At Rezatec, we use Earth Observation (EO) data to provide valuable forestry decision support, identifying certain changes that are indicative of anthropogenic or natural event disturbance enabling a faster response to the threat to minimise its impact on your area.

For further details and pricing, contact us on +44 (0)1865 817 500 or email info@rezatec.com

